



**Bracke**  
FOREST



# History

- *Founded 1922*
- *1965 the first site prep machine "Bracke Scarifier"*
- *1970 first unit exported to Canada*
- *1991 first Bracke Planter*
- *2004 changed name to Bracke Forest AB*
- *2013 Cranab Group acquired Bracke Forest AB*
- *2022 Komatsu group acquired Bracke Forest from Cranab Group.*



Almost 100 years of technological development, from equipment pulled by horses to today's high-tech forestry equipment, but...

The seedling is still in the focus with the same needs for good growth and survival as 100 years ago.

# Location



Bracke Forest AB

📍 Svedjegatan 11, 84331 Bräcke, SWEDEN

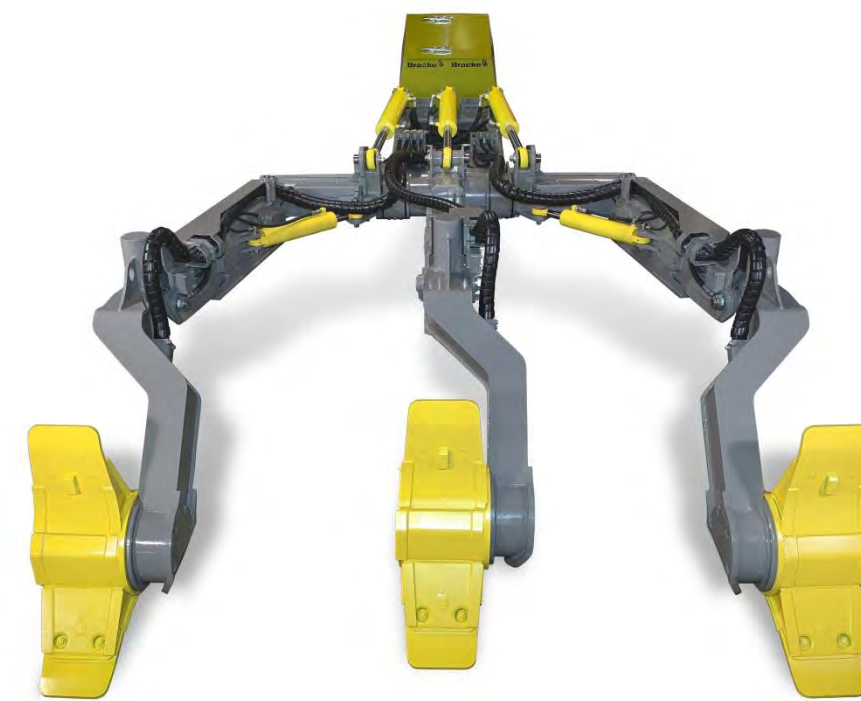
# Product range



## Trenchers



## Mounders



## Planters



## Felling heads for biomass



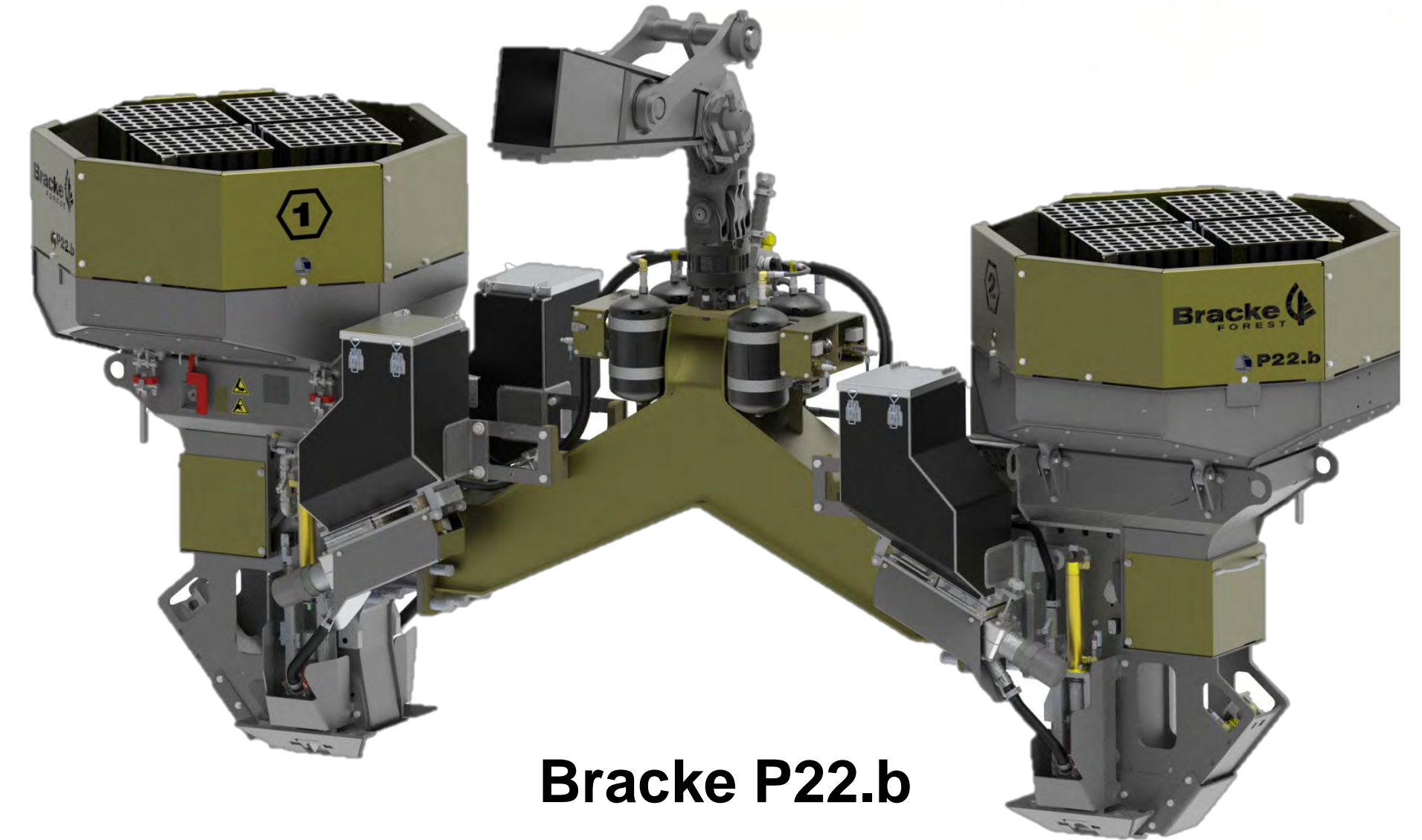
# Bracke Planters



Bracke P11.b



Bracke P12.b



Bracke P22.b



D61 EM Planter

# Planters

## Bracke P11.b



### Technical data

Prime mover	Excavator 14-20 metric tons
Weight	1350 – 1450 kg
Planting type	Container plants
Seedlings Carousel (capacity)	Standard 60 mm (196 seedlings) Option 75mm (100 seedlings)
Bucket	Standard 450 mm
Options	Fertilizer: Slow release applicator Irrigation: Water/water-based gel Quick feeding boxes
Productivity	Up to 300 seedlings per hour

# Planters

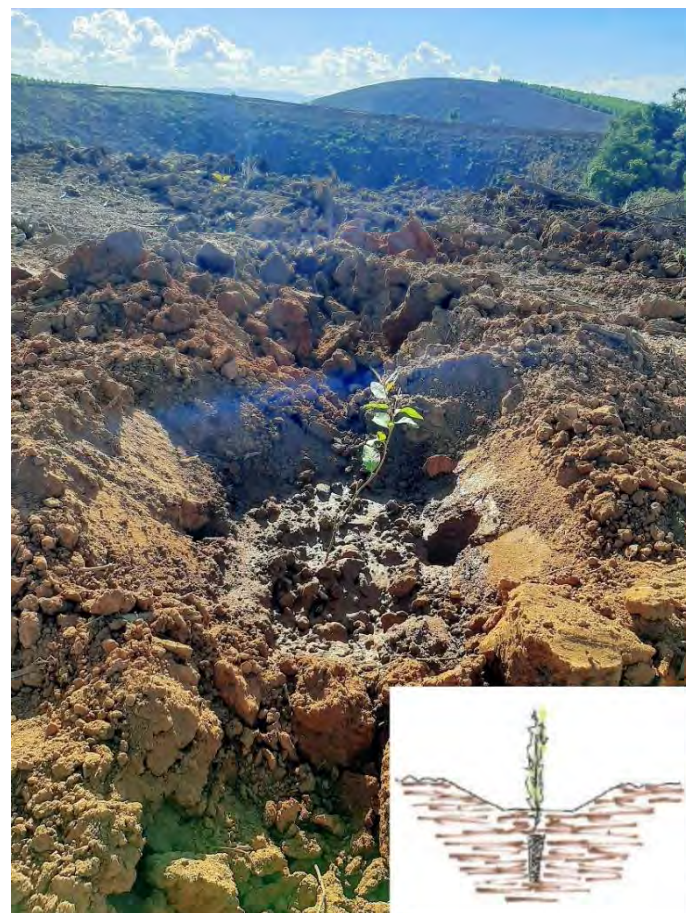
## Bracke P11.b



Refilling the seedlings

# Planters

## Bracke P12.b



### Technical data

Prime mover	Excavator 20-24 metric tons
Weight	2100 kg – depends on options
Planting type	Container plants
Seedlings Carousel (capacity)	Standard 60 mm (196 seedlings) Option 75mm (100 seedlings)
Rippering tool	Single or triple rods – 400 up to 800 mm
Options	Fertilizer: Slow-release applicator/ side holes Irrigation: Water/water-based gel Quick feeding boxes
Productivity	Up to 250 seedlings per hour



# Planters

**Bracke P12.b**

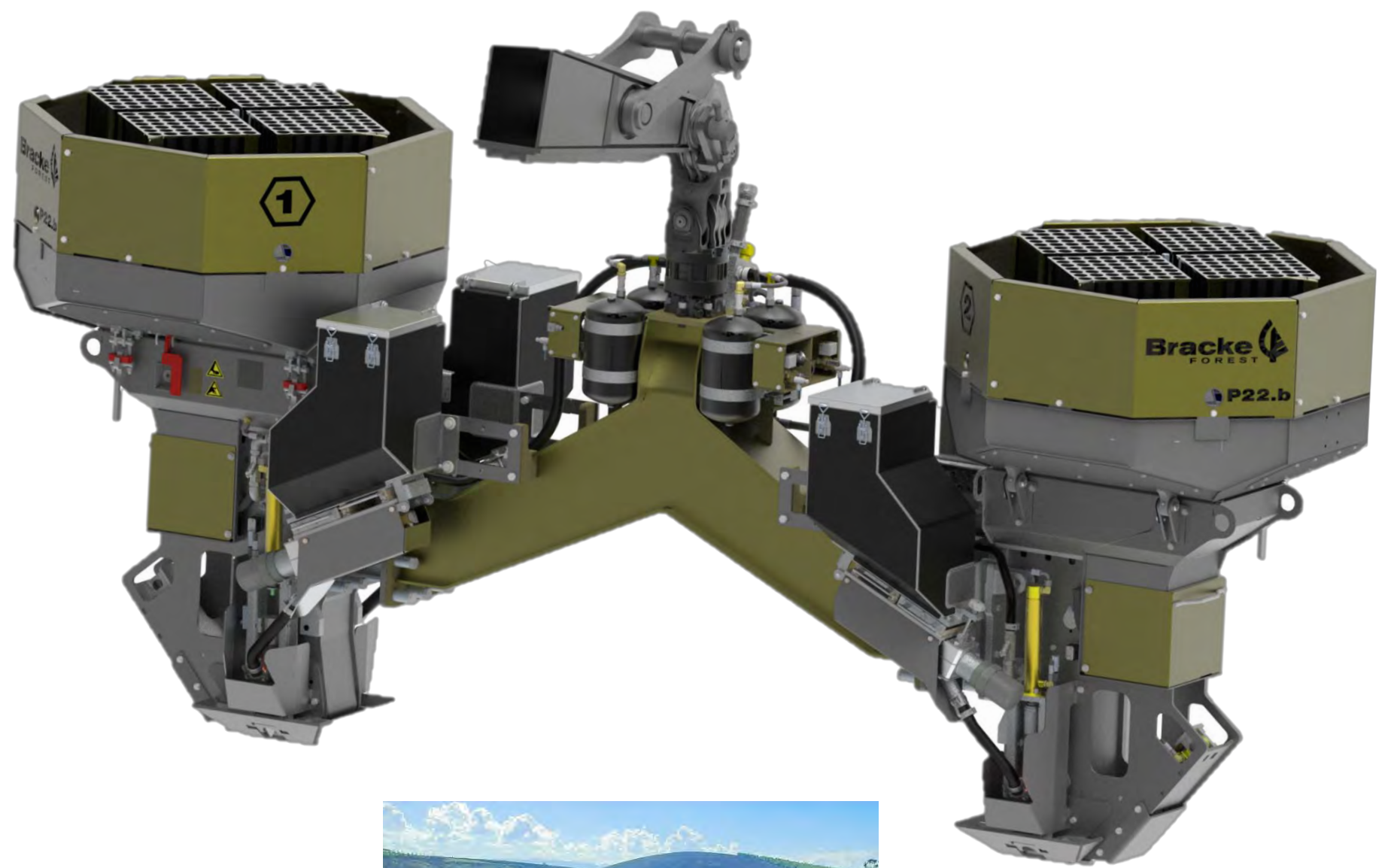


# Planters

## Bracke P22.b

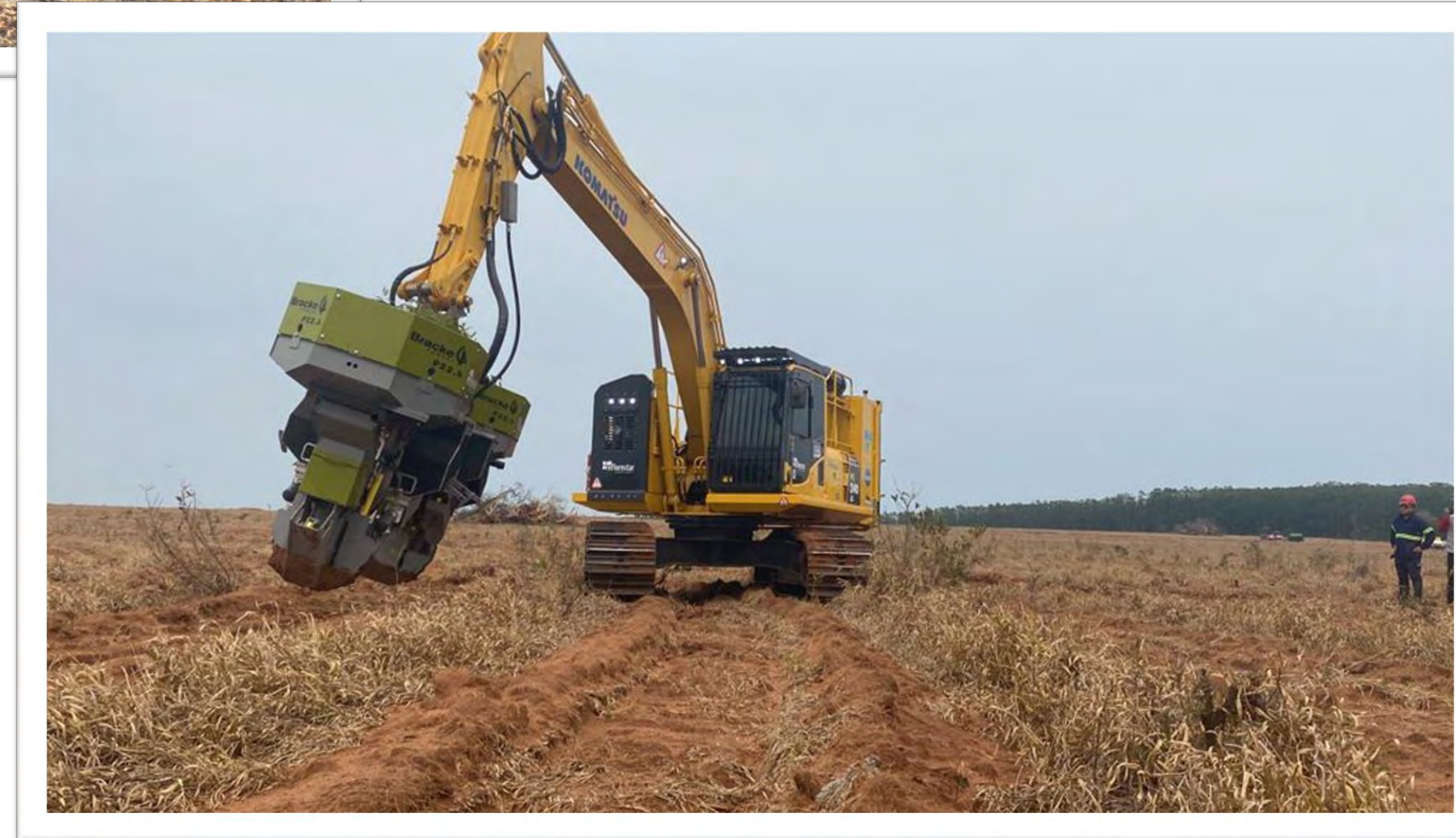
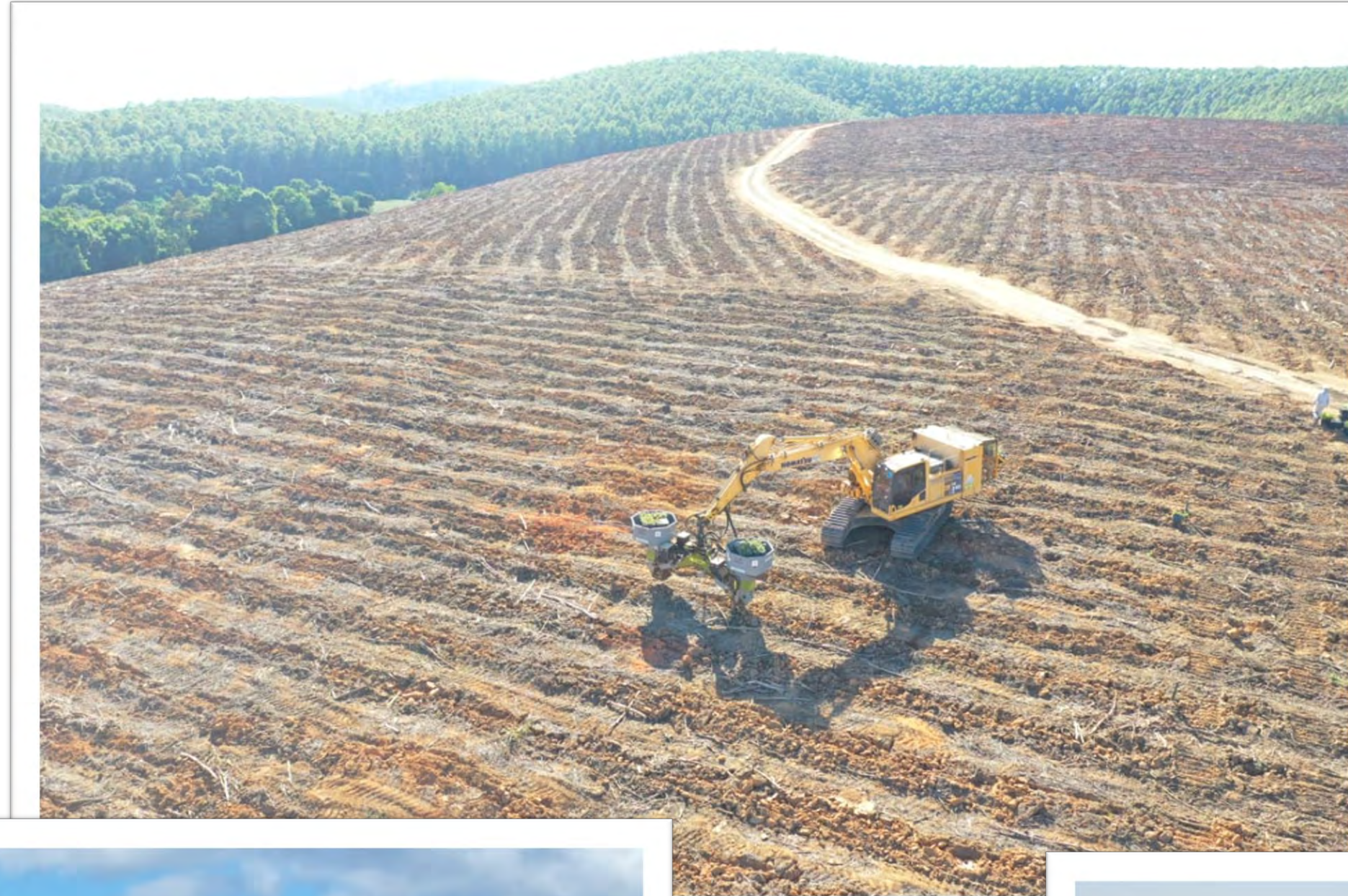
### Technical data

Prime mover	Excavator 24 metric tons
Weight	2470 kg – depends on options
Planting type	Container plants
Seedlings Carousel (capacity)	Standard 60 mm (392 seedlings) Option 75mm (200 seedlings)
Options	Fertilizer: Slow-release applicator/ side holes Irrigation: Water/water-based gel Quick feeding boxes
Productivity	Up to 600 seedlings per hour



# Planters

Bracke P22.b



# Planters

## D6I Planter

### Technical data

Prime mover	Bulldozer – Komatsu D61
Weight	950 kg – each planting unit
Planting type	Container plants
Seedlings Carousel (capacity)	Standard 60 mm( 588 seedlings)
Options	Fertilizer: Slow-release applicator Irrigation: Water/water-based gel Quick feeding boxes Georeferencing the planting spots
Productivity	Up to 900 seedlings per hour



# Planters

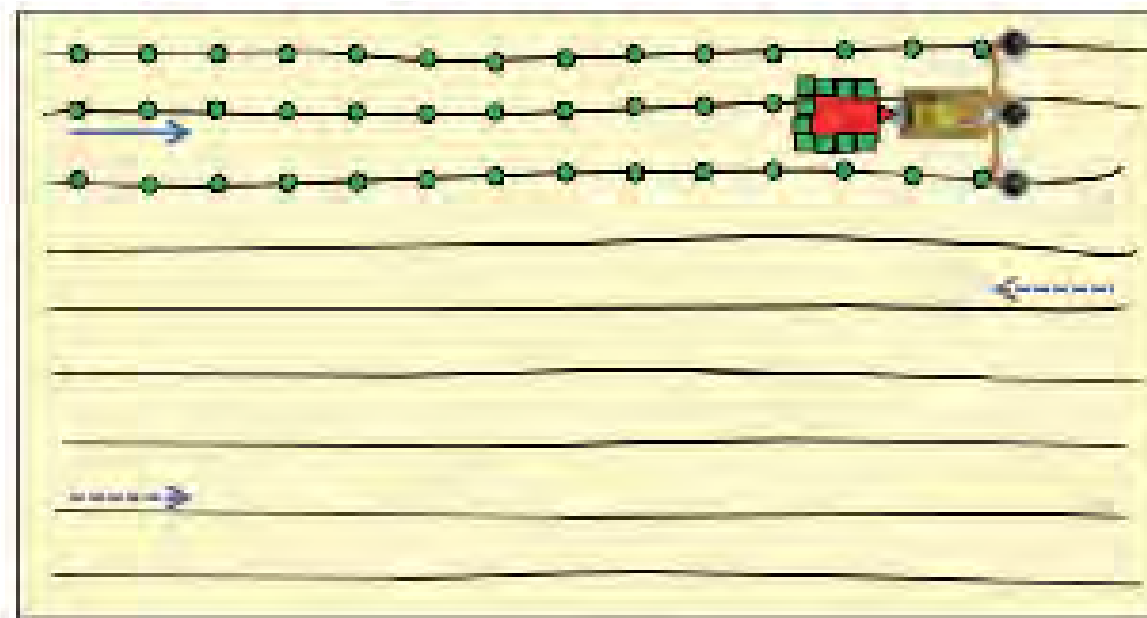
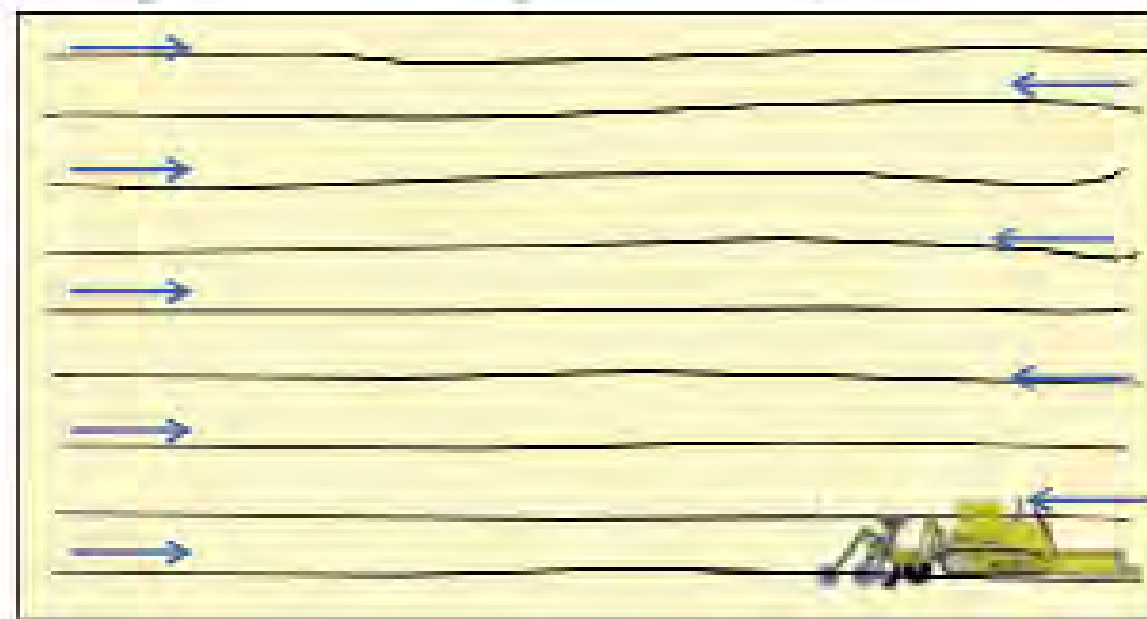
## D6I Planter



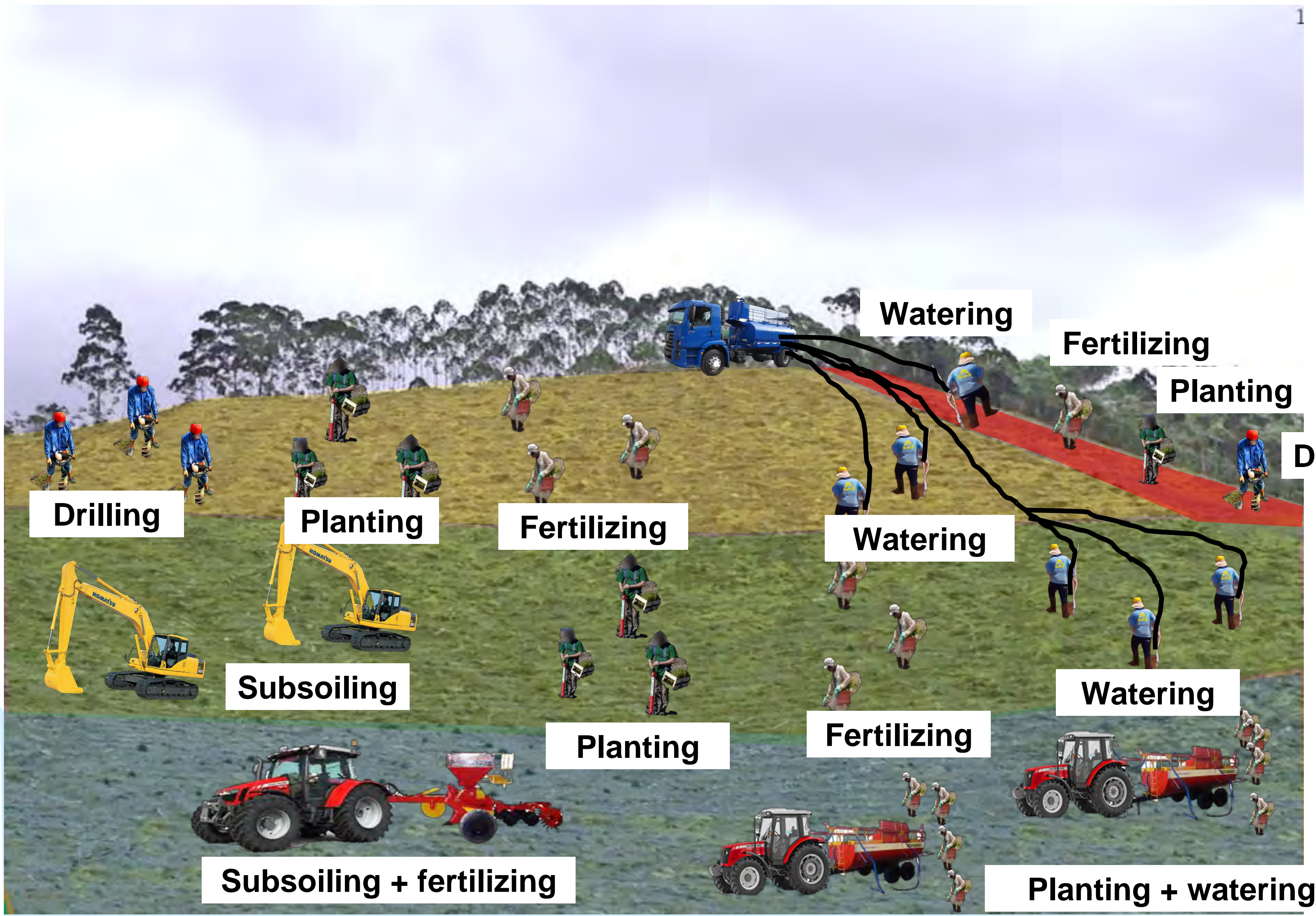
Map made by the subsoiling activity, and shared with the planter



Each planter follows one georeferenced row



# Slope conditions - standard silviculture activities



Drilling

Watering

Fertilizing

Planting

Drilling

Planting

Fertilizing

Watering

Subsoiling

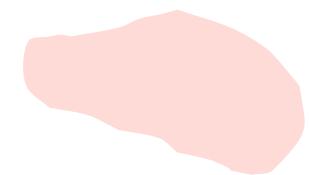
Watering

Planting

Fertilizing

Subsoiling + fertilizing

Planting + watering



Steep – Over 35°



Moderate Steep – 27° to 35°

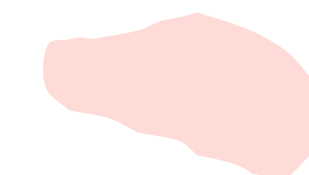


Undulating – 17° to 27°



Flat – 0° to 17°

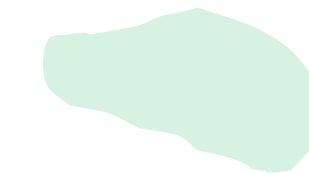
# Slope conditions – current mechanized silviculture



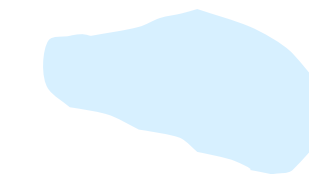
**Steep – Over 35°**



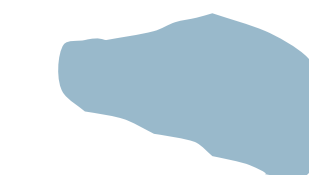
**Moderate Steep – 27° to 35°**



**Undulating – 17° to 27°**

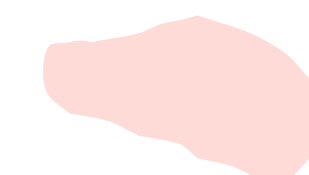


**Soft undulating – 5° to 17°**

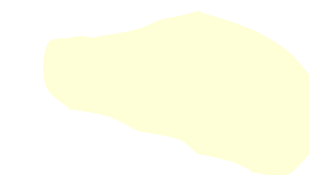


**Flat – 0° to 5°**

# Slope conditions - mechanized silviculture – next step



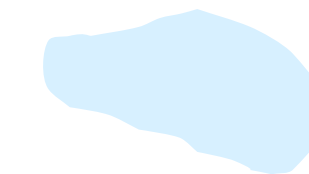
**Steep – Over 35°**



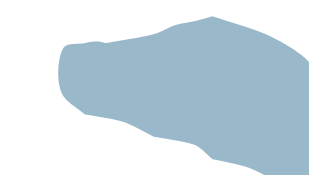
**Moderate Steep – 27° to 35°**



**Undulating – 17° to 27°**



**Soft undulating – 5° to 17°**



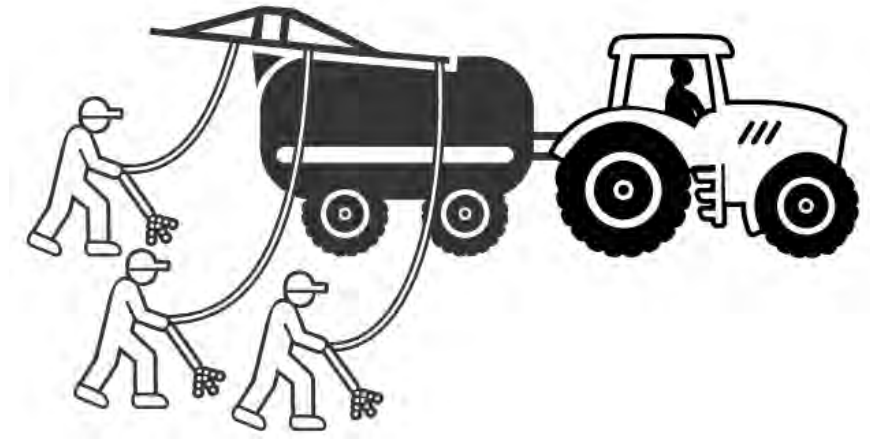
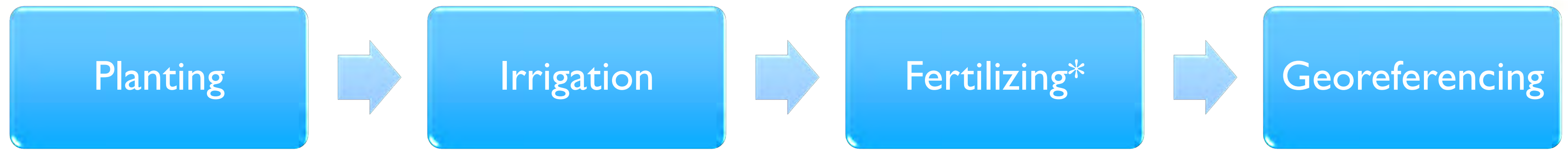
**Flat – 0° to 5°**



# Slope conditions - mechanized silviculture – next step



# Current x Mechanized – Flat areas (0° up to 5 °)



Not done



**Current x Mechanized – Soft undulating areas (5° up to 17°)**

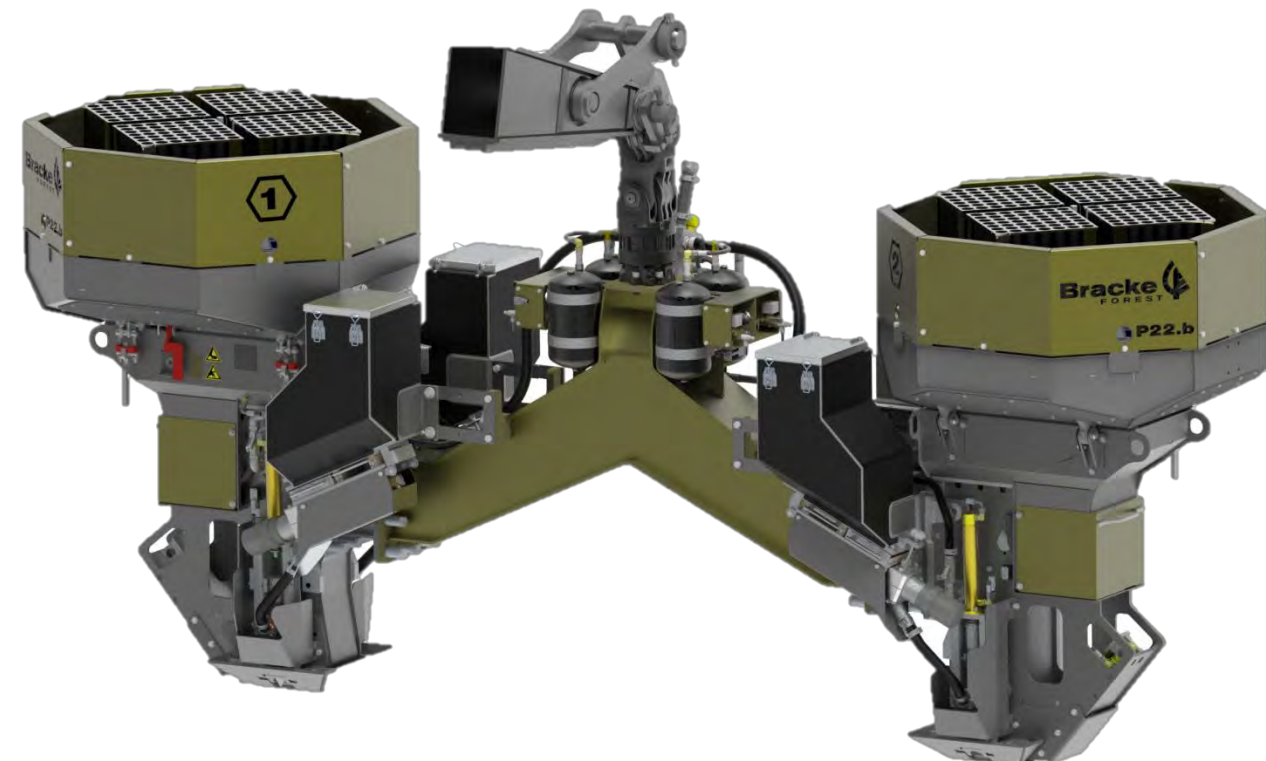
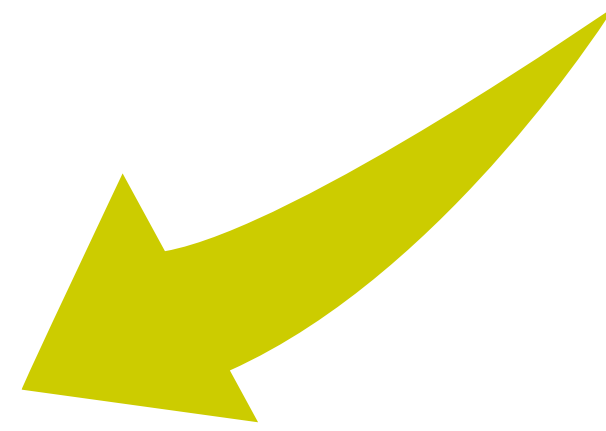
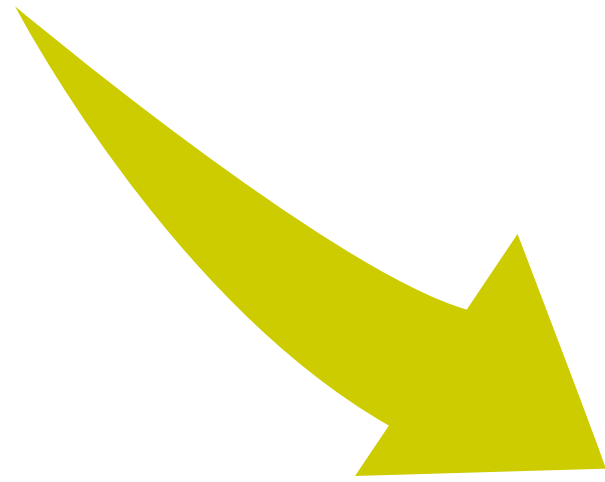
Planting



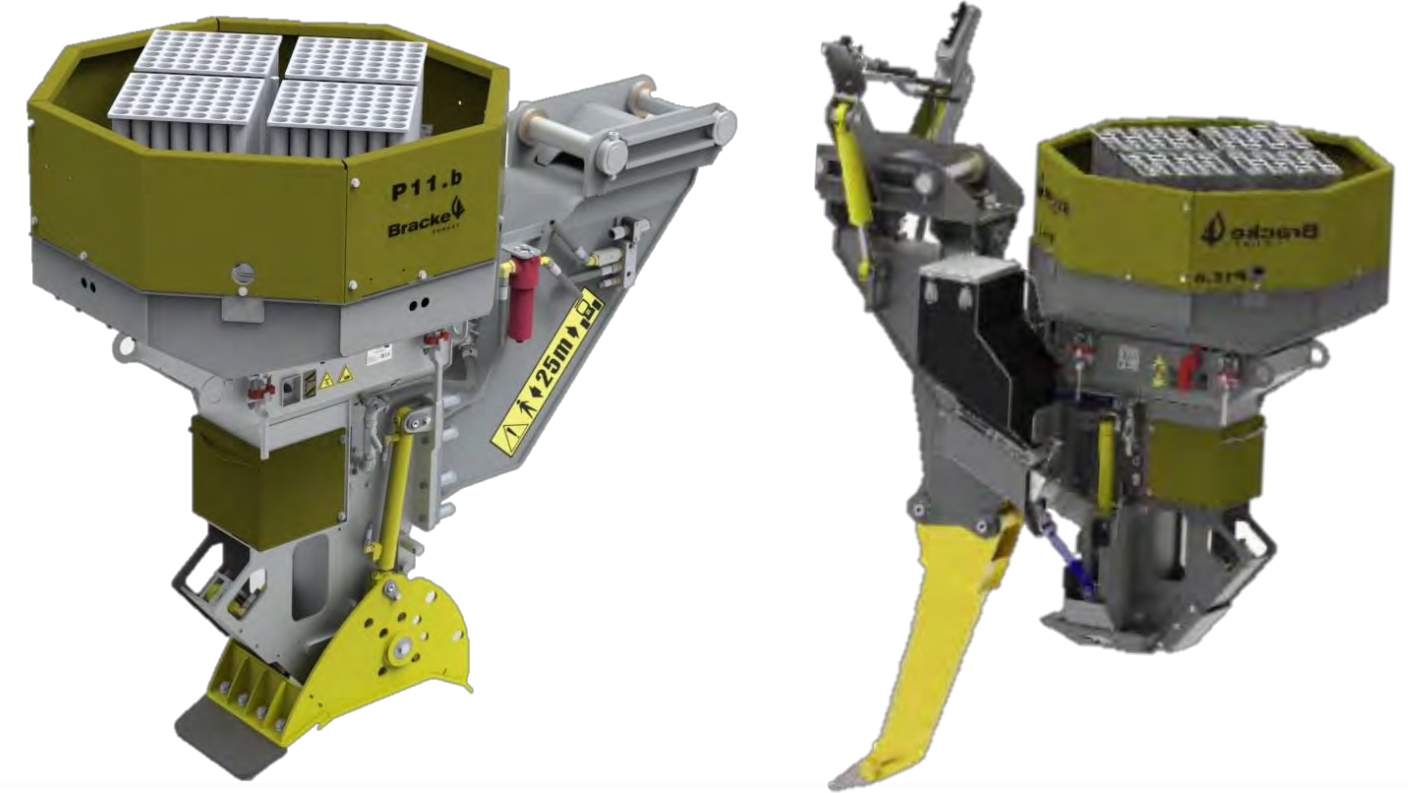
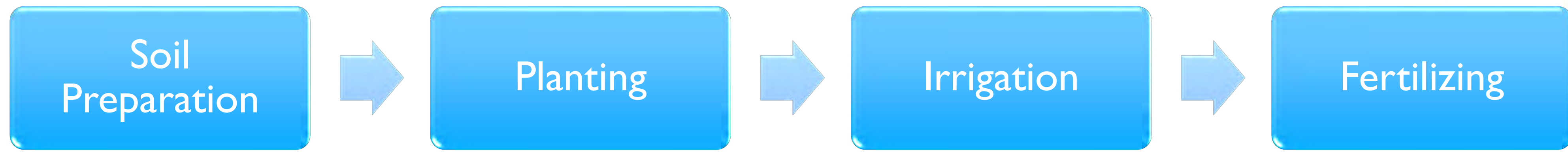
Irrigation



Fertilizing



**Current x Mechanized – Undulating areas (17° up to 27°)**



# Current x Mechanized – Mechanization Index



		Subsoiling	Planting	Fertilizing	Watering
<b>Current</b>	Flat	Mechanized	Semi-mechanized	Mechanized	Semi-mechanized
	Soft Undulating	Mechanized	Manual	Manual	Manual
	Undulating	Manual	Manual	Manual	Manual
	Moderate Steep	Manual	Manual	Manual	Manual
	Steep	Manual	Manual	Manual	Manual
<b>Bracke equipments</b>	Flat	Mechanized	Mechanized	Mechanized	Mechanized
	Soft Undulating	Mechanized	Mechanized	Mechanized	Mechanized
	Undulating	Mechanized	Mechanized	Mechanized	Mechanized
	Moderate Steep	Manual	Manual	Manual	Manual
	Steep	Manual	Manual	Manual	Manual

**20 operations**  
**3 fully mechanized**  
**2 semi-mechanized**  
**15 manual**

**15% Mechanized\***

**20 operations**  
**16 fully mechanized**  
**4 manual**

**60% Mechanized\***

*\*considering just the number of operations, not per area*

**Thank you**



**Any doubts, contact me:  
[rafael.soler@brackeforest.com](mailto:rafael.soler@brackeforest.com)**